

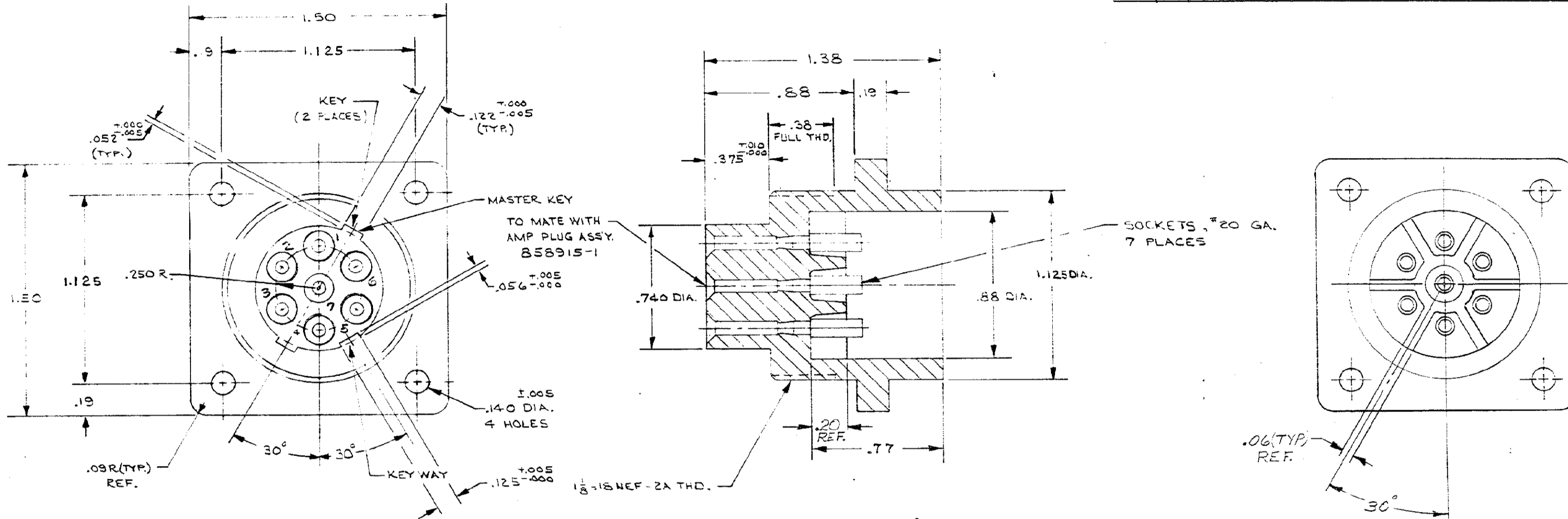
DRAWING MADE IN AMERICAN PROJECTION

© 1968 BY AMP INCORPORATED. ALL RIGHTS RESERVED. AMP PRODUCTS COVERED BY PATENTS AND/OR PATENTS PENDING.

THIS PRODUCT DESIGNED AND BUILT BY AMP INCORPORATED. NO LICENSE TO USE THIS DESIGN IN MANUFACTURE, OR TO USE ANY ISSUED OR PENDING PATENTS WHICH ARE INVOLVED, IS IMPLIED.

REVISIONS

ZONE	LTR	DESCRIPTION	DATE	APPROVED
	A	1.125 WAS 1.250	C.D. 5/2/68	GWS
	B	1.125 WAS 1.250	C.D. 6/3/68	GWS
C-4	C	REV. PIN NO'S 6-7-68	9/1/68	GWS
2-B 4-C 3-C-2-C	D	ADDED NOTES & .09 R.	10/1/68	GWS
	E	ADDED DIMS TO KEYS & KEYWAY, ADDED .250 R., .740, .375, .38 DIMS.	10/1/68	GWS
	F	ADDED FINS TO REAR OF CONNECTOR	11-1-71	EJ
	G	REVISED PIN MARKING	3-12-74	W.F.
	H	UP-DATED ECN 8364	8-16-78	M.L.



NOTE:
 1. CUSTOMER TO ATTACH LEADS & ENCAPSULATE AGAINST BREAKDOWN.
 2. CONTACT NO'S. ARE MARKED ON RECEPTACLE

PART NO. IS THIS DWG - 1

QTY REQD	QTY REQD	ITEM NO.	DWG SIZE	PART OR IDENTIFYING NO.	NOMENCLATURE OR DESCRIPTION	SYMBOL
-2	-1					

UNLESS OTHERWISE SPECIFIED: DIMENSIONS ARE IN INCHES TOLERANCES .00 = .03 ANGLES = 10°30' .000 = .010				CONTRACT NO. DR <i>Offshore</i> 3-6-68		AMP INCORPORATED CAPITRON DIVISION ELIZABETHTOWN, PENNSYLVANIA	
MATERIAL: MOLDED GLASS EPOXY				NAME RECEPTACLE 7 CONTACT		LGH	
FINISH: NATURAL				DSGN APPD <i>GWS Law</i> 3-7-68		SIZE C	CODE IDENT NO. 89110
NEXT ASSY				OTHER APPD		NUMBER 858916	
QTY REQD				APPLICATION		SCALE	WT
858917-1						SHEET 1 of 1	

PRINT DIST. L 137

858916

UP-DATED