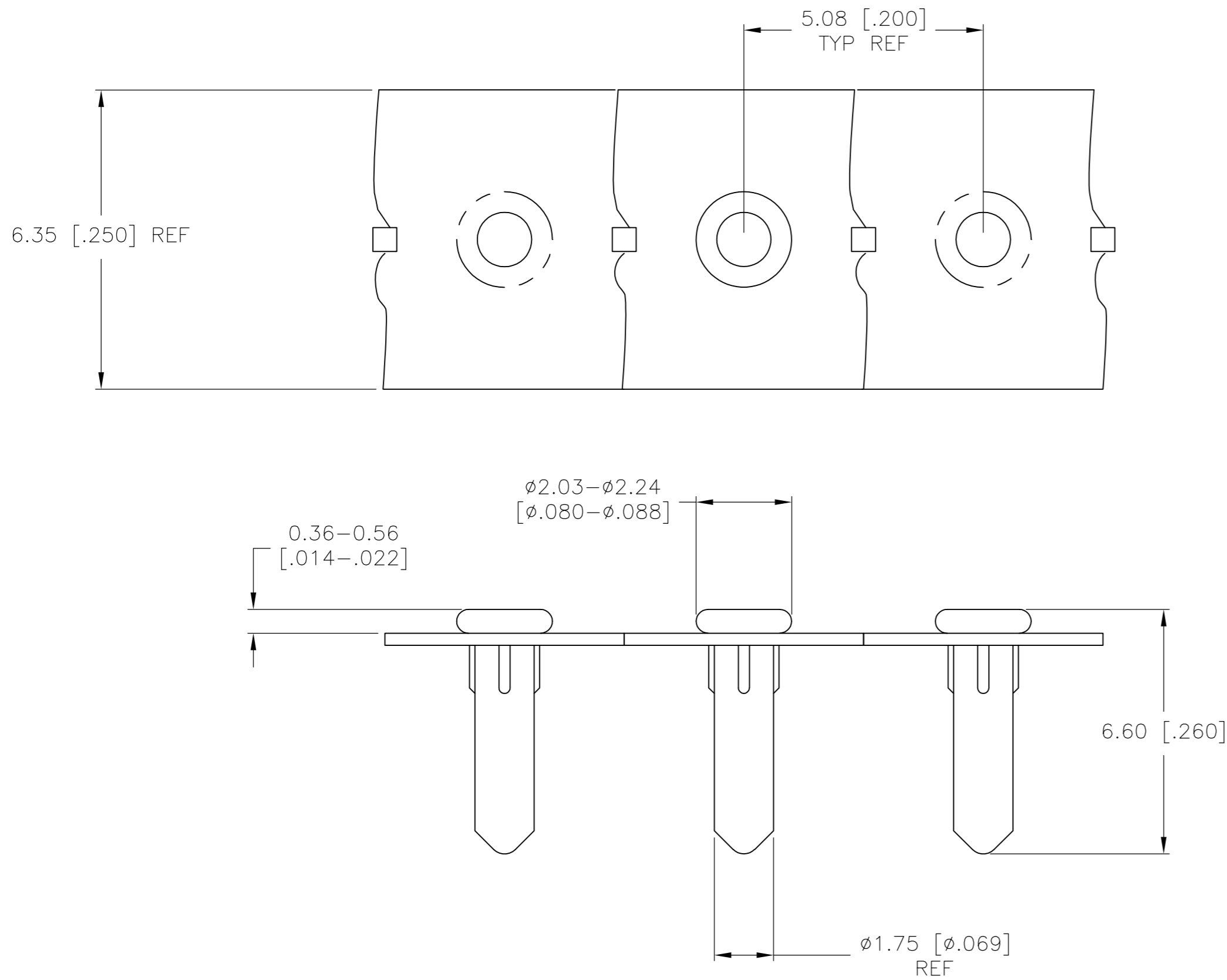
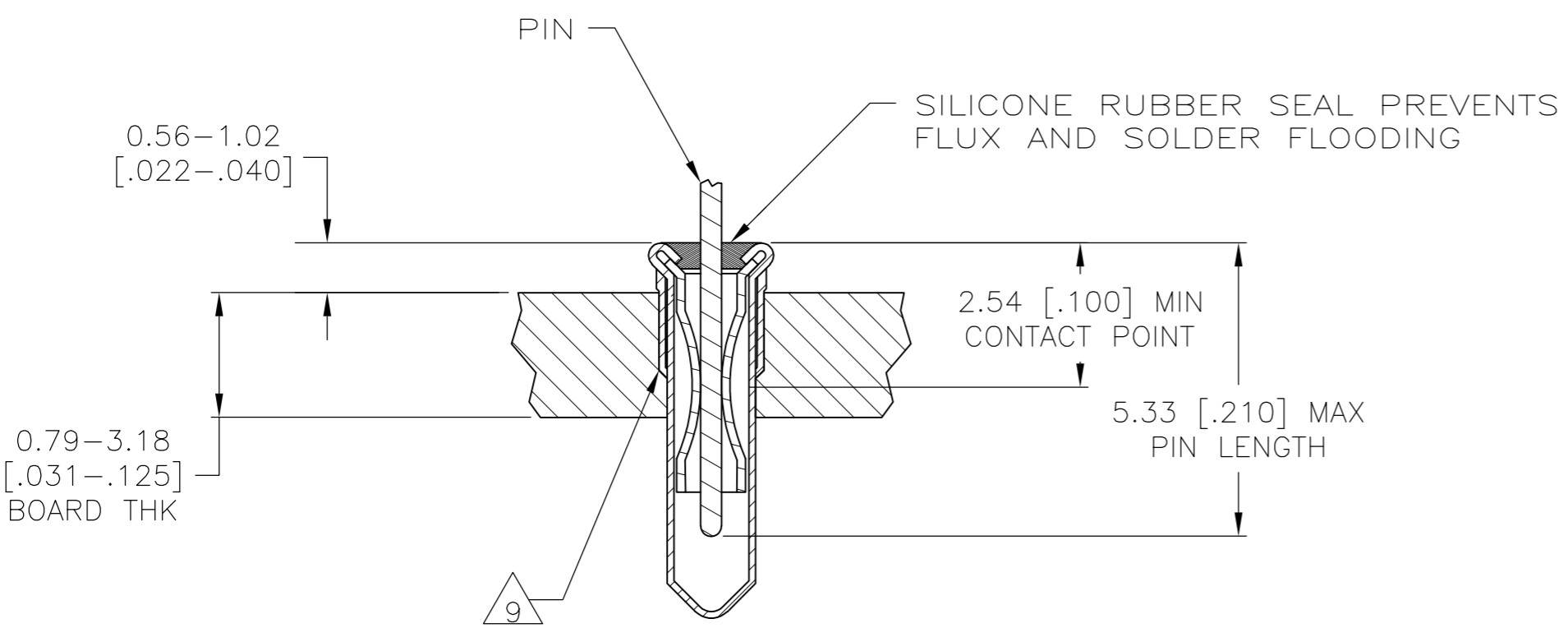


THIS DRAWING IS UNPUBLISHED. RELEASED FOR PUBLICATION
 © COPYRIGHT BY TYCO ELECTRONICS CORPORATION. ALL RIGHTS RESERVED.

LOC	DIST	REVISIONS					
AG	53	P	LTR	DESCRIPTION	DATE	DWN	APVD
		H		REV PER ECO-09-026264	09MAR2010	HMR	DB



- 1 MATERIAL:
EYELET- COPPER(QQ-C-576)
SPRING- BERYLLIUM-COPPER (QQ-C-533)
SEALANT- SILICONE RUBBER
- 2 TIN PLATE (MIL-T-10727) 0.00381 [.000150]
MINIMUM THICKNESS.
- 3 TIN PLATE (MIL-T-10727) 0.00254 [.000100]
MINIMUM THICKNESS.
- 4 NICKEL UNDERPLATE ALL OVER, MATING SURFACE PLATED TO MEET
PERFORMANCE REQUIREMENTS OF TYCO PRODUCT SPECIFICATION
108-14008.
- 5 PACKAGED 10,000 PER REEL.
- 6 TO ENSURE 1/2 OZ MIN RETENTION, DO NOT
EXCEED 0.50 [.002] DIFFERENCE IN PIN DIA
WHEN CHANGING TO A SMALLER DIA PIN.
- 7. APPLICATION TOOLING: MACHINE NO.- 817917-4.
- 8 TIN-LEAD PLATE 0.00381 [.000150]
MINIMUM THICKNESS.
- 9 SHOULDER ON SOCKET PROVIDES RETENTION IN THE
P.C. BOARD. THE RECOMMENDED HOLE DIAMETER IS
1.75 [0.069] MINIMUM, + 0.08 [.003] MAXIMUM
PRIOR TO SOLDERING.
- 10 PACKAGED 50,000 PER REEL.
- 11 PACKAGED 100,000 PER REEL.
- 12 PRELIMINARY - NOT RELEASED FOR PRODUCTION.



OBSOLETE	11, 12	0.94-1.04 [0.037-0.041]	TIN 3	TIN 2	1-645501-5
	10	0.94-1.04 [0.037-0.041]	TIN 3	TIN 2	1-645501-4
	5	0.94-1.04 [0.037-0.041]	GOLD 4	TIN 8	1-645501-3
	5	0.94-1.04 [0.037-0.041]	TIN 3	TIN 2	1-645501-2
	5	0.94-1.04 [0.037-0.041]	GOLD 4	TIN 2	1-645501-1
REMARKS	PIN DIA	SPRING FINISH	EYELET FINISH	PART NO.	

THIS DRAWING IS A CONTROLLED DOCUMENT.

DIMENSIONS: mm [INCHES]	TOLERANCES UNLESS OTHERWISE SPECIFIED: 0 PLC ± - 1 PLC ± - 2 PLC ± - 3 PLC ± 0.20[.008] 4 PLC ± - ANGLES ± -	DWN K.SALMON 3-9-90 CHK R.MILLER 3-13-90 APVD -	Tyco Electronics Corporation Harrisburg, Pa 17105-3608			
		PRODUCT SPEC 108-14008	MINIATURE SPRING SOCKET ASSY SERIES 4			
MATERIAL 1	FINISH SEE TABLE	APPLICATION SPEC 114-26004	SIZE A2	CAGE CODE 00779	DRAWING NO C=645501	RESTRICTED TO -
CUSTOMER DRAWING			SCALE 10:1	SHEET 1 OF 1	REV H	