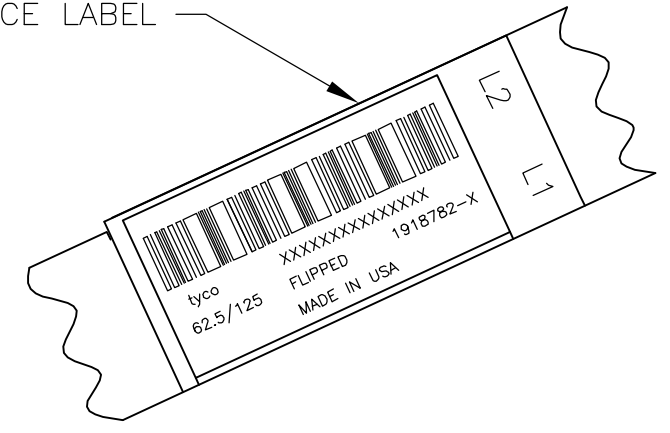
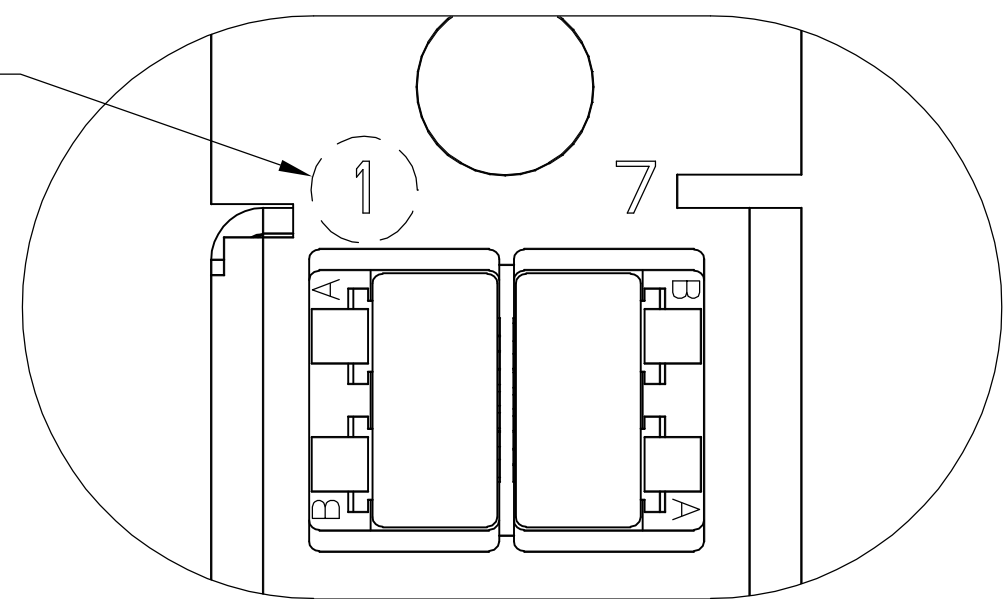
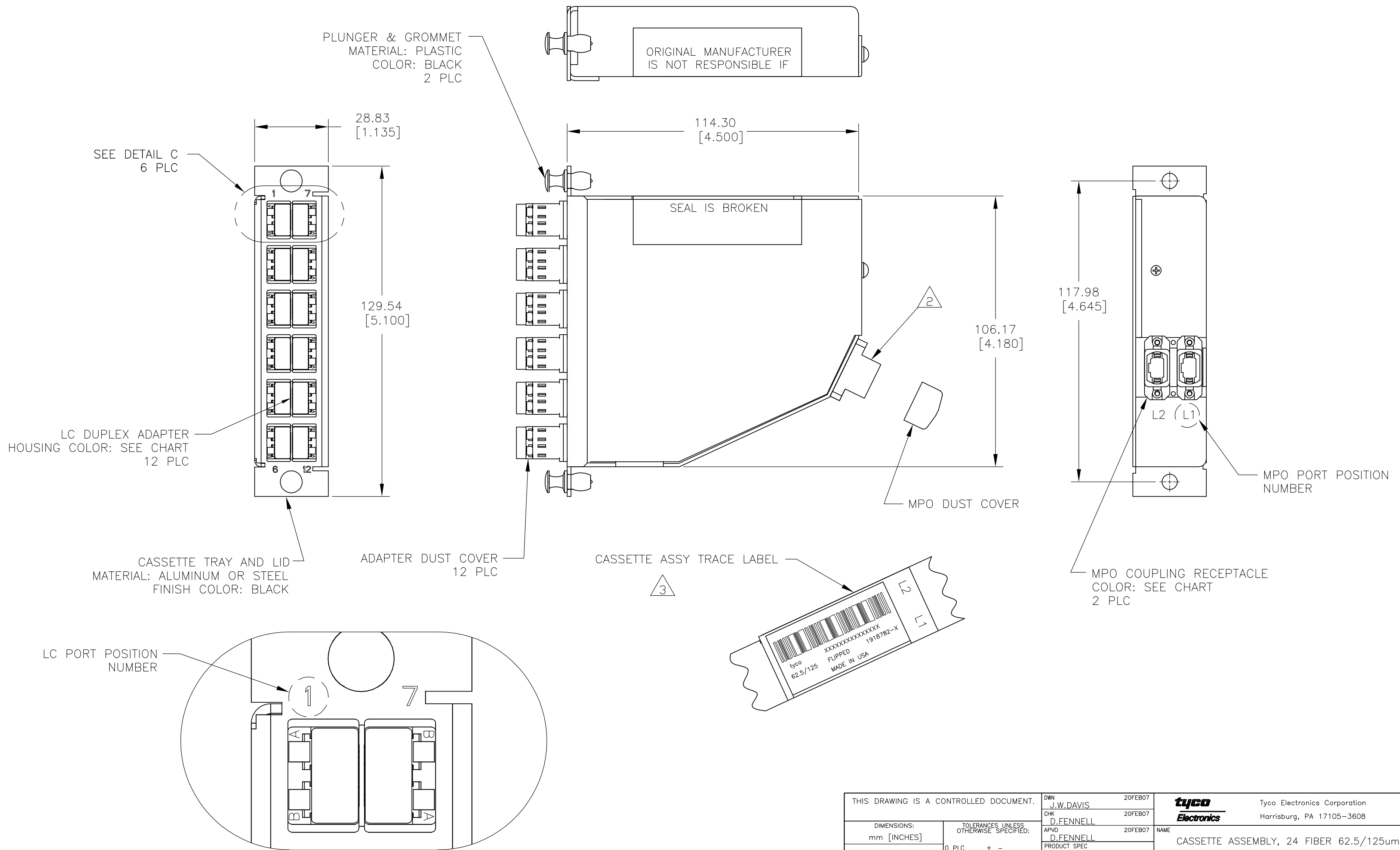


LOC	DIST	REVISIONS					
CE	16	P	LTR	DESCRIPTION	DATE	DWN	APVD
		A		RELEASED	20FEB07	JWD	DLF

D  
C  
B  
A

D  
C  
B  
A



THIS DRAWING IS A CONTROLLED DOCUMENT.		DWN	J.W.DAVIS	20FEB07		Tyco Electronics Corporation	
DIMENSIONS: mm [INCHES]		CHK	D.FENNELL	20FEB07		Harrisburg, PA 17105-3608	
TOLERANCES UNLESS OTHERWISE SPECIFIED:		APVD	D.FENNELL	20FEB07	NAME	CASSETTE ASSEMBLY, 24 FIBER 62.5/125um	
0 PLC ± -		PRODUCT SPEC			MPO - LC PAIRS FLIPPED		
1 PLC ± -		APPLICATION SPEC			SIZE	A2	
2 PLC ± -					CAGE CODE	00779	
3 PLC ± -					DRAWING NO	C=1918782	
4 PLC ± -					RESTRICTED TO		
ANGLES ± -					SCALE	NTS	
FINISH -					SHEET	1 of 2	
MATERIAL -		CUSTOMER DRAWING			REV	A	

1918782

THIS DRAWING IS UNPUBLISHED. RELEASED FOR PUBLICATION  
 © COPYRIGHT BY TYCO ELECTRONICS CORPORATION. ALL RIGHTS RESERVED.

LOC	DIST	REVISIONS			
P	LTR	DESCRIPTION	DATE	DWN	APVD
CE	16	SEE SHEET 1	-	-	-

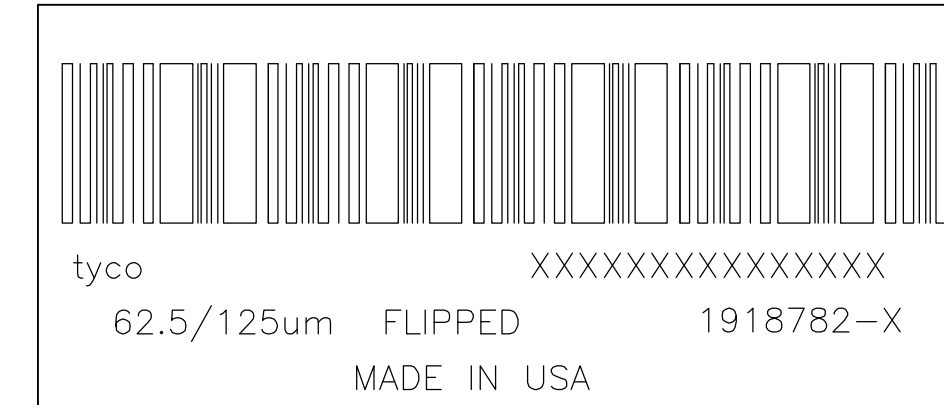
1. MAXIMUM CASSETTE ASSEMBLY LOSS: 1.25dB.

2. WHITE MARKING ON MPO TO BE FACING TOWARD TOP OF CONNECTOR MODULE. WHITE MARK INDICATES FIBER 1 SIDE

3. SEE TRACE LABEL DETAIL

4. A COPY OF CASSETTE ASSEMBLY LOSS TEST DATA WILL BE PLACED INSIDE OR WITH THE UNIT PACKAGE. CASSETTES WILL BE TESTED AT 1300nm WAVELENGTH.

5. PRODUCT AND PROCESSING MUST MEET REQUIREMENTS OF TYCO ELECTRONICS STANDARD 230-702



FIBER PATH - PAIRS FLIPPED

MPO L1 PORT POSITION NO	MPO L2 PORT POSITION NO	LC PORT POSITION NO
1	-	1A
2	-	1B
3	-	2A
4	-	2B
5	-	3A
6	-	3B
7	-	4A
8	-	4B
9	-	5A
10	-	5B
11	-	6A
12	-	6B
-	1	7A
-	2	7B
-	3	8A
-	4	8B
-	5	9A
-	6	9B
-	7	10A
-	8	10B
-	9	11A
-	10	11B
-	11	12A
-	12	12B

AQUA SECURE	AQUA SECURE	1-1918782-1
SLATE SECURE	SLATE SECURE	1-1918782-0
ROSE SECURE	ROSE SECURE	1918782-9
VIOLET SECURE	VIOLET SECURE	1918782-8
BROWN SECURE	BROWN SECURE	1918782-7
ORANGE SECURE	ORANGE SECURE	1918782-6
YELLOW SECURE	YELLOW SECURE	1918782-5
BLUE SECURE	BLUE SECURE	1918782-4
GREEN SECURE	GREEN SECURE	1918782-3
RED SECURE	RED SECURE	1918782-2
BLACK STANDARD	BEIGE STANDARD	1918782-1
MPO COUPLING BUSHING COLOR & TYPE	LC ADAPTER COLOR & TYPE	PART NUMBER

THIS DRAWING IS A CONTROLLED DOCUMENT.		DWN J.W.DAVIS 20FEB07	Tyco Electronics Corporation Harrisburg, PA 17105-3608	
DIMENSIONS: mm [INCHES]		CHK D.FENNELL 20FEB07	NAME CASSETTE ASSEMBLY, 24 FIBER 62.5/125um MPO - LC PAIRS FLIPPED	
TOLERANCES UNLESS OTHERWISE SPECIFIED:		APVD D.FENNELL 20FEB07	PRODUCT SPEC -	
0 PLC ± - 1 PLC ± - 2 PLC ± - 3 PLC ± - 4 PLC ± - ANGLES ± - FINISH -		APPLICATION SPEC -	SIZE A2	CAGE CODE 00779
MATERIAL -		WEIGHT -	DRAWING NO C=1918782	RESTRICTED TO -
CUSTOMER DRAWING			SCALE NTS	SHEET 2 of 2 REV A