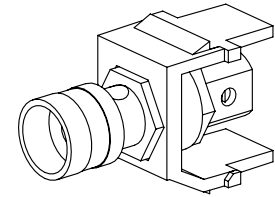
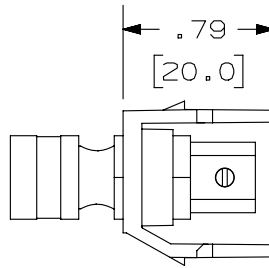
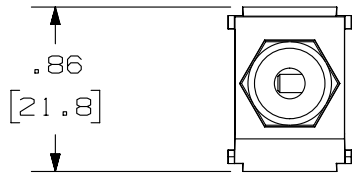
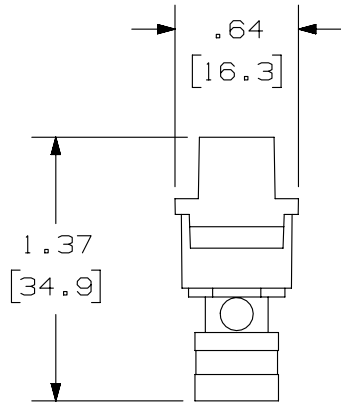


THIS COPY IS PROVIDED ON A RESTRICTED BASIS AND IS NOT TO BE USED IN ANY WAY DETRIMENTAL TO THE INTERESTS OF PANDUIT CORP.



PANDUIT P/N	WEIGHT
NKBPR**Y	.25 LB/10 PCS (115.2 g/10 PCS)
NKBPB**Y	.25 LB/10 PCS (115.2 g/10 PCS)

NOTES:

1. SEE CURRENT CATALOG FOR ADDITIONAL PART NUMBER SUFFIXES TO INDICATE COLOR AND OR PACKAGE QUANTITY.
2. SEE CATALOG FOR COMPLETE LIST OF PARTS APPLICABLE FOR USE WITH THIS PART.
3. DIMENSIONS IN PARENTHESES ARE IN METRIC.

A

PART NUMBER		NKBPR**Y, NKBPB**Y	
TITLE			
NETKEY 5-WAY BINDING POST MODULE			
CUSTOMER DRAWING			
ITEM REVISION NAME		M02479IS/00	
DATASET FILE NAME		M02479IS_DC229/00B	
UNLESS OTHERWISE SPECIFIED, DIMENSIONAL TOLERANCES ARE: IN [mm]		MATERIAL:	
.x ± .xx ± .03 [.8]		MODULE - ABS CONNECTOR - GOLD PLATED	
.xxx ± .010 [.3] ANGLES ±		DRAWING NUMBER:	
THIRD ANGLE PROJECTION		02479-229	
DRAWN BY	DATE	CHK	SCALE
JSP	4-19-06	REFR	NONE
SHT 1 OF 1			SIZE
			A

REV	DATE	BY	CHK	APR	DESCRIPTION	ECN
1	5-16-14	MDJR	REFR	JCK	A. UPDATED TITLE BLOCK.	02479-229
R	4-19-06	JSP			RELEASED TO PRODUCTION	02479-229

D10100DA/14