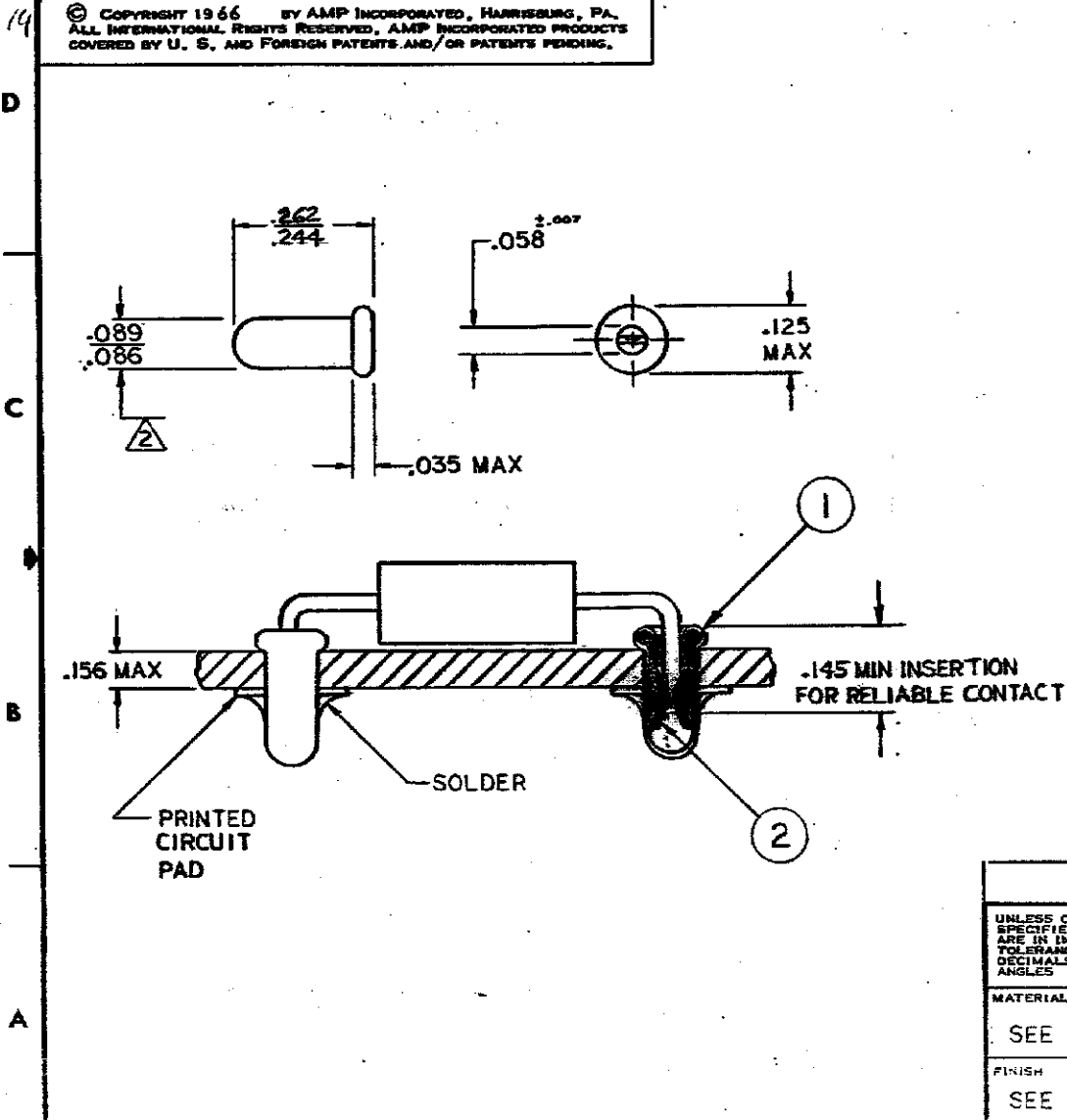


DRAWING MADE IN THIRD ANGLE PROJECTION

© COPYRIGHT 1966 BY AMP INCORPORATED, HARRISBURG, PA.
 ALL INTERNATIONAL RIGHTS RESERVED, AMP INCORPORATED PRODUCTS
 COVERED BY U. S. AND FOREIGN PATENTS AND/OR PATENTS PENDING.


		REVISIONS			
REV	DATE	ZONE	LTR	DESCRIPTION	APPROVED
J	4-25-78			REDRAWN W/O CHNG M-5090	D.H.
K	3/23/79			REV, ADDED I--1, M-5182, M-5230	PAS/D.H.
L	3/10/79			REV. NOTE 2 M-5446	PAS/D.H.
L1	4-24-80			RESTORATION	ESB/CY
M	12-22-81			REV AG 1047 LOC TO CY	SDM
M1	4-12-82			REV PER AG-5173	VS
N	5-10-82			REV PER AG-5123	RTD



1 ACCEPTS .036-.054 DIA PIN.

△ FITS INTO NO. 43 DRILLED HOLE (.0890 ± .0015) FOR HAND INSERTION OR NO. 44 DRILLED HOLE (.0860 ± .0015) FOR MACHINE INSERTION

ITEM No.	DESCRIPTION	MATERIAL & FINISH	PART NO
1	CUP	COPPER, TIN-LEAD	1-380758-1
2	SPRING	BE. CU, GOLD	
1	CUP	COPPER, TIN-LEAD	1-380758-0
2	SPRING	BE. CU, TIN	

UNLESS OTHERWISE SPECIFIED DIMENSIONS ARE IN INCHES. TOLERANCES ON: DECIMALS ±.015 ANGLES °	CONTRACT NO	 AMP INCORPORATED Harrisburg, Pa.		
	DR 4-25-78			
	MATERIAL	NAME	REUSABLE COMPONENT RECEPTACLE	
	FINISH	SIZE	CODE IDENT NO	DRAWING NO
SEE TABLE	B	00779	380758	
SEE TABLE	OTHER APPD	SCALE	SHEET	